

REFLECTIONS & CITIZENSHIP

SCHOOL OF INSTRUCTION

AUGUST 2023

SMAC/SMSD PTA Chairs Workshop



Shawnee Mission
Area Council

PTA[®]

everychild one voice[®]

WELCOME

Lori Stanziola & Becky Richmond

SMAC/SMSD PTA Reflections Co-Chairs

Dee Wright

SMAC/SMSD PTA Citizenship Chair

What we'll cover:

- *Overview of the programs*
- *Getting Started, Covering the Basics*
- *Helpful Hints, getting information*
- *Student Recognition*
- *Your Questions*

"Unmask My Truth"
Destyni Meadows, SMNW
PTA National Award of Merit



CONTEST TIMEFRAMES

REFLECTIONS (tentative dates)

**SEPTEMBER 5-
OCTOBER 19**
Run Local Contest

**OCTOBER 19-
NOVEMBER 4**
Judge & Award
Local Winners

**NOVEMBER 4-
DECEMBER 5**
Judge & Award
SMAC Winners

JANUARY 12
State Deadline

JANUARY 22
Recognize
SMAC Winners

CITIZENSHIP (tentative dates)

**NOVEMBER 1-
DECEMBER 6**
Run Local Contest

**DECEMBER 6-
JANUARY 10**
Judge & Award
Local Winners

**JANUARY 10-
FEBRUARY 14**
Judge & Award
SMAC Winners

FEBRUARY 14
State Deadline

FEBRUARY
Recognize
SMAC Winners

WHAT IS REFLECTIONS?



2023-2024

**CALL FOR
ENTRIES!**

**I am
Hopeful
Because...**

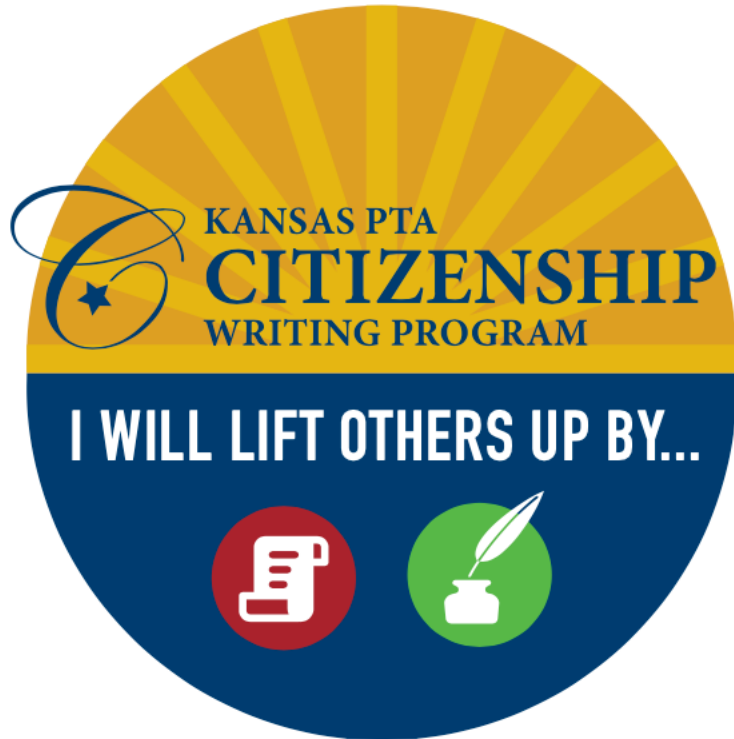
Explore the arts and
express yourself!

Learn more and get involved!
smac-pta.org/reflections

REFLECTIONS is a NATIONAL PTA program, started in 1969

- *Over 10 million participants*
- *Supplements arts in school*
- *Each year has a theme, this year it's "I am Hopeful Because..."*
- *Pre K through 12th grade*

WHAT IS CITIZENSHIP?



The Citizenship Writing Contest is a signature KANSAS State PTA program

- *It provides an opportunity for students to think about citizenship and what it means*
- *Each year has a theme*
- *This year's theme is "I Will Lift Others Up By..."*
- *Grades 5 - 12*

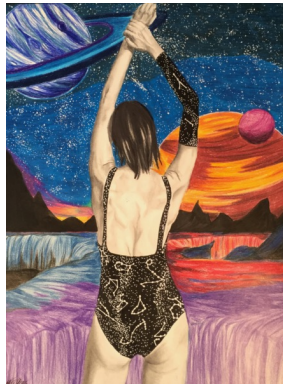
WHY DO THESE CONTESTS?

They provide opportunities for...

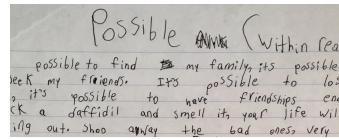


*Self expression
& exploration*

*Access to
the arts*



Creativity



Recognition



*Student
engagement &
success!*



REFLECTIONS



REFLECTION ART CATEGORIES

DIVISIONS

Primary: Pre K – 2nd grades
Intermediate: 3rd – 5th grades
Middle School: 6th – 8th grades
High School: 9th – 12th grades
Special Artist: Pre K – 12th grades



Film Production



Literature



Dance Choreography



**Music
Composition**



Photography



Visual Arts



Special Artist

***YOU can select which
Art Categories you
want to offer...
one or all!***

GETTING STARTED

- *START EARLY 😊*
- *Review local leaders guide*
- *Form a committee*
- *Check out the SMAC website (smac-pta.org/reflections)*
- *Review materials*
- *Unit in Good Standing*
- *Facebook group for collaboration*
- *SMSD District email list*

The screenshot shows the SMAC PTA website with a navigation bar including Home, News, Clothing Exchange, Legislative, Reflections, Citizenship, and More. A yellow 'RESOURCES' button is in the top right. The main content area features a yellow 'LOCAL LEADERS GUIDE' button, a red '2020-2021 RESOURCES: (*TO BE UPDATED SOON)' header, and a vertical stack of green buttons: REFLECTIONS FLYER, CALL FOR ENTRIES POSTER, CALL FOR ENTRY BOOKMARKS, REFLECTIONS FACEBOOK POST, CALL FOR ENTRIES VIDEO, ENTRY FORM, ENTRY FORM (ESPAÑOL), OFFICIAL RULES, REVIEWER PACKET, and *PRINTABLE AWARDS. To the right, a list of dates and deadlines is provided: 2020-2021 DATES: SEPTEMBER 15: LOCAL LAUNCH (Launch the contest in your school); OCTOBER 15: LOCAL DEADLINE (Suggested student entry due date for your school); NOVEMBER 6: DISTRICT DEADLINE (Turn in your winning school entries to SMAC Reflections Chairs (location TBD)); DECEMBER 8: REFLECTIONS OPEN HOUSE (Learn the results of the District judging and enjoy a showcase of local school winners); JANUARY 15: STATE DEADLINE (District winners entered in state contest (by SMAC Reflections Chairs)); and JANUARY 12, MONDAY (Reflections SMSD/SMAC PTA Awards Ceremony and Reception with the Board of Education (BOE) (5:30, before the BOE meeting)). A yellow sidebar on the right contains social media icons for Facebook, Twitter, and Instagram.

A green banner with a dark blue button that says 'REFLECTIONS CHAIRS CLICK HERE'. Below the button, on the left, is the text 'JOIN US ON FACEBOOK!' next to a large purple circular arrow icon. On the right, there is a Facebook 'f' logo and the text 'PTA Reflections Chairs: Join the SMSD Reflections conversation on Facebook'.

REFLECTIONS KEY DATES

**SEPTEMBER 5-
OCTOBER 19**
Run Local Contest

- *Promote the contest*
- *Make entry forms available*
- *Collect entries*
- *Make sure forms and entries meet contest requirements*

**OCTOBER 19-
NOVEMBER 4**
Judge & Award
Local Winners

- *Organize entries*
- *Distribute to judges*
- *School recognition*

**NOVEMBER 4 –
DECEMBER 5**
Judge & Award
Council Winners

- *Submit winners to Council*
- *Council Judging*
- *Winners submitted to Field Service Representatives*

JANUARY 12
State Deadline

- *Winners submitted to State*
- *State winners announced in March*
- *Student recognition and reception*

REFLECTIONS STUDENT ENTRIES

- *Official rules and entry form*
- *Customize to your program*
- *Fill out ALL sections of entry*
- *Reflections Artist statement*
- *Legible & accurate*
- **NEW!** *Digital entry forms (PTA will accept digital signatures)*

“A Different Forest”
Ella Coash-Johnson, Westridge MS
PTA National Award of Merit



PRO Tips:

- Visual Arts & Photography: collect artwork & digital file
- Correct digital file formats
- Use email, google docs, etc to streamline
- Form provides the information for advancing entries to the next round - keep it safe!
- One for every entry, not one per student

How to Enter
This form is for the online personal reflections on this year's theme.
Submissions are due to _____ by _____.
Experiences and entries receive more weight for representation of those, ready or not, to help us look forward to celebrating our artists and achievement in the art. Have the date for this year's Reflections Competition: _____.

Entry Overview
This online form consists of all the information you need to complete the registration process. It may be for the performer or one of the performers. Background must be used in the entry form. Make the most of the award (single and 1000 MB) (1000 MB) (single) by the due date and in the PTA form.

File Protection
Accepted file formats include: illustrations, cartoons, documentary, experimental or mixed presentation. Accepted file formats include: illustrations, cartoons, documentary, experimental or mixed presentation. Accepted file formats include: illustrations, cartoons, documentary, experimental or mixed presentation. Accepted file formats include: illustrations, cartoons, documentary, experimental or mixed presentation.

Literature
Accepted file formats include: illustrations, cartoons, documentary, experimental or mixed presentation. Accepted file formats include: illustrations, cartoons, documentary, experimental or mixed presentation. Accepted file formats include: illustrations, cartoons, documentary, experimental or mixed presentation. Accepted file formats include: illustrations, cartoons, documentary, experimental or mixed presentation.

Artist Statement
Accepted file formats include: illustrations, cartoons, documentary, experimental or mixed presentation. Accepted file formats include: illustrations, cartoons, documentary, experimental or mixed presentation. Accepted file formats include: illustrations, cartoons, documentary, experimental or mixed presentation. Accepted file formats include: illustrations, cartoons, documentary, experimental or mixed presentation.

Photography
Accepted file formats include: illustrations, cartoons, documentary, experimental or mixed presentation. Accepted file formats include: illustrations, cartoons, documentary, experimental or mixed presentation. Accepted file formats include: illustrations, cartoons, documentary, experimental or mixed presentation. Accepted file formats include: illustrations, cartoons, documentary, experimental or mixed presentation.

Visual Arts
Accepted file formats include: illustrations, cartoons, documentary, experimental or mixed presentation. Accepted file formats include: illustrations, cartoons, documentary, experimental or mixed presentation. Accepted file formats include: illustrations, cartoons, documentary, experimental or mixed presentation. Accepted file formats include: illustrations, cartoons, documentary, experimental or mixed presentation.

Special Arts
Accepted file formats include: illustrations, cartoons, documentary, experimental or mixed presentation. Accepted file formats include: illustrations, cartoons, documentary, experimental or mixed presentation. Accepted file formats include: illustrations, cartoons, documentary, experimental or mixed presentation. Accepted file formats include: illustrations, cartoons, documentary, experimental or mixed presentation.

To be completed by PTA before distribution.

Local PTA: _____ Local Program Code: _____ Email: _____ Phone: _____
Covered PTA: _____ District PTA: _____ Region PTA: _____ State PTA: _____
Member Due: _____ Past Due: _____ Incoming Past Due: _____ System Approval Due: _____

Student Name: _____ Grade: _____ Age: _____ Classroom: _____
Parent/Guardian Name: _____ Email: _____ Phone: _____
Mailing Address: _____ City: _____ State: _____ Zip: _____

Consent to any submission shall remain the property of the contest, but entry into the program constitutes our irrevocable agreement and consent that PTA may display, copy, reproduce, release, print, submit to a book, distribute and make derivative works for PTA purposes. PTA is not responsible for lost or damaged entries. Submission of entry into the PTA National Award of Merit program constitutes agreement to the above statement and the National PTA Reflections Official Rules.

Student Signature: _____ Parent/Guardian Signature: _____

Grade Division Check One
 Elementary (Grades 1-5)
 Intermediate (Grades 6-8)
 Middle School (Grades 9-12)
 High School (Grades 13-18)
 Adult Artist (All Grades)

Art Category Check One
 Visual Arts
 Photography
 Mixed Media
 Sculpture
 Printmaking
 Other

Title of Work _____ **Details** _____
Background must be credit to description. Entries are required to include word count for literature. List maximum or representation for music. List dimensions for photography/artwork.

Artist Statement: 100-150 words, describe your work and how it relates to the theme.



CITIZENSHIP



CITIZENSHIP CATEGORIES

GRADES 5 THROUGH 12




POETRY



ESSAY

GETTING STARTED

- *START EARLY 😊*
- *Review local leaders guide*
- *Form a committee*
- *Check out the SMAC website (smac-pta.org/citizenship)*
- *Review materials*
- *Facebook group for collaboration*



It's easy to implement the Citizenship program at your school - click below for a guide to making it happen.

LOCAL LEADERS GUIDE

2020-2021 DATES:

NOVEMBER 2: LOCAL LAUNCH
Launch the contest in your school

DECEMBER 7: LOCAL DEADLINE
Student entry due date for your school

JANUARY 11: DISTRICT DEADLINE
Turn in your winning school entries to Dee Wright (location TBD)

FEBRUARY 15: STATE DEADLINE
District winners entered in state contest (by Dee Wright)

FEBRUARY 15, MONDAY
Citizenship SMSD/SMAC PTA Awards Ceremony and Reception with the Board of Education (BOE) (5:30, before the BOE meeting)

Are you a student wanting to enter the contest?
Here are the rules and entry form:

OFFICIAL RULES

STUDENT ENTRY FORM

Questions? Contact Dee Wright, SMAC VP Cultural Arts, at christlwright@aol.com

CITIZENSHIP CHAIRS CLICK HERE

JOIN US ON FACEBOOK!



PTA Citizenship Chairs:
Join the SMSD Citizenship conversation on Facebook



CITIZENSHIP STUDENT ENTRIES

*See rules in Program Packet,
some highlights include:*

- *New, original work relating to the theme*
- *Work is judged by relevance to the theme over technique or grammar*
- *Poetry 50 - 500 words; Essay 200 – 1000 words*
- *Students who are physically challenged may dictate to another person*
- *Students for whom English is not their first language may submit entries in their own language*

PRO TIPS:

- Be sure that entry forms are filled out completely and LEGIBLY
- Make sure entries have the correct word count
- Consider DIGITAL entry forms and entries (pdf format)



CITIZENSHIP KEY DATES

**NOVEMBER 1–
DECEMBER 6**
Run Local Contest

- *Promote the contest*
- *Make entry forms available*
- *Collect entries*
- *Make sure forms and entries meet contest requirements*

**DECEMBER 6 –
JANUARY 10**
Judge & Award
Local Winners

- *Organize entries*
- *Distribute to judges*
- *School recognition*

**JANUARY 10 –
FEBRUARY 14**
Judge & Award
Council Winners

- *Submit winners to Council*
- *Council Judging*
- *Winners submitted to Field Service Representatives*

FEBRUARY 14
State Deadline

- *Winners submitted to State*
- *State winners announced in March*
- *Student recognition and reception*



STEPS FOR SUCCESS



PULLING IT OFF IN YOUR SCHOOL



PLAN

- *Check school calendar*
- *Plan in reverse to deadlines*
- *Determine categories & divisions*
- *Download materials & customize*
- *Print handouts & posters*
- *Budget for activities & promotional materials*



PROMOTE

- *Back to School events (or virtual events)*
- *Talk to art, music, writing teachers (but try not to add to their workload)*
- *Social media*
- *Posters in school & local businesses*
- *Flyers in school newsletters or website*
- *Local dance studios*

JUDGING THE ENTRIES

- *Tap into pro judges - recommendations from school, local pros, area colleges & universities - network & share resources*
- *Distribute student work and reviewer packet*
- *Time frame and venue options*
- *Blind judging*
- *NO TIES!*
- *Confidentiality*



Reviewer Packet Contains:

- Welcome Letter
- Instructions
- Rubric
- Score Card

CELEBRATE YOUR ENTRIES

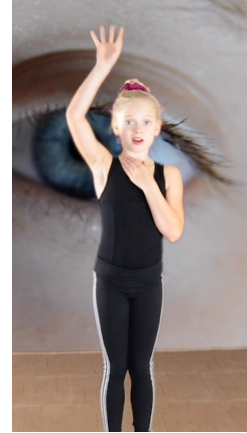
- *Honor as many kids as you can*
- *Announce awardees*
- *Pictures with permission*
- *Celebration event*
- *Certificates/awards*
- *Display work (virtually?)*
- *School yearbook*
- *School social media*

Award Examples



ADVANCE THE WORK

- *First place in each category*
- *State collection by deadline*
- *G-Drive location for digital sharing*
(HIGHLY ENCOURAGED)
- *Ideally, share digital entry forms, music scores, photography files (film, dance & music already digital)*
- **NOTE:** *Visual art entries can be digitized by State PTA for consistency*



STUDENT RECOGNITION

- *Spring reception for State Winners*
- *Kansas students have been recognized **NATIONALLY***



Stars in The City

Arya loved the stars. They had amazed her since she was a baby. Before she could walk, her dad used to take her outside and show her the planets, moons, and stars through a little telescope her mom had bought at a garage sale. But the thing she loved most was the stars. She was mesmerized by them every night, and was always waiting for the evening, when she could go outside and stargaze.

At the age of four, Arya went to the planetarium. For most kids her age, the planetarium was amazingly boring. But Arya loved it. She forced her parents to let her stay until closing. Now Arya loved to read too, and she could read at a fourth grade level at four, so naturally, when her family stopped at the gift shop, she picked up a book a third of her size, and dragged it to the checkout line. Please let me have it.

Her mom checked the price, and took it from her to the line. Arya smiled at her mom, and her mom smiled back.

What an amazing day.

On Arya's sixth birthday, nothing much happened. Did they forget? No, my parents never forget anything. Literally. Arya decided to snoop around for secret presents. She found six vanilla cupcakes with aqua blue frosting, a package of streamers, and a happy birthday banner. So they planned a little surprise party. Nice, but not very well covered up. They probably invited a couple friends of mine.

Arya acted unsuspecting of the party they had planned all day. At about five o'clock, Arya was led outside with her eyes closed by her father. She expected to see a little table between the two large oak trees with cupcakes and lemonade, the streamers and banner strung up between them, and her two best friends sitting at the table.

Instead, she saw the treehouse of her dreams.

Wow! This is way more than I was expecting.

From the outside, it was a simple treehouse, with a little deck. A rope ladder hung

“Stars in the City”
Ishya Bhavsar, Briarwood Elementary
PTA National Award of Merit

QUESTIONS?

Reflections contacts:

Lori Stanziola (lori@lskcdesign.com)

Becky Richmond (buck.rich100@gmail.com)

Citizenship contact:

Dee Wright (christlwright@aol.com)



**Shawnee Mission
Area Council**

PTA[®]

everychild onevoice[®]

SMAC/SMSD PTA Zoom Workshop